

Aktuell

Our performance – your success



KOMATSU

Emco places a strong focus on automation: New partnership for CNC automation

emco



Markus Grud, Managing Director of vision.eXpress, Daniel Schöpf, Managing Director of automation.eXpress, Karl Pichler, COO of EMCO and Jörg Weinkogl, CSO of EMCO are delighted about the partnership.

A persistent shortage of skilled labour and a sharp rise in unit labour costs are presenting CNC manufacturers with immense challenges. More and more companies are looking for efficient automation solutions to make their production processes more economical and future-proof. This development has prompted Emco to enter into an exclusive cooperation with automation.eXpress.

Together, they want to take the automated loading and unloading of Emco machines to a new level.

Thanks to their close cooperation, fully integrated, holistic solutions are available from a single source that are perfectly tailored to customer requirements.

Smart automation

"Our core expertise lies in the development and production of durable, high-quality CNC machines. But the industry is changing rapidly and we have to evolve accordingly", notes Karl Pichler, COO of Emco. More and more flexibility is required, particularly in loading and unloading, in order to successfully master future challenges.

Jörg Weinkogl, CSO of Emco adds:

"Our machines stand for maximum precision and durability. With the right automation, their performance can be utilised even more flexibly, even when tomorrow's requirements change.

Daniel Schöpf, Managing Director of automation.eXpress:

"We are proud to be working with a renowned company like the Emco Group."

Kuhn Group focuses on photovoltaics and sustainable energy



In total, we have installed PV systems with an output of 1,500 kWp.

In collaboration with Salzburg AG, the photovoltaic system in Eugendorf was recently expanded by 163 kWp. 395 PV panels generate more than 170,000 kWh of electricity per year, most of which is consumed by the company itself.

"Climate and environmental protection is a central, strategic part of the Kuhn Group. It was therefore immediately clear to us that we would gradually fit all our sites with PV systems. We started in 2020 with our headquarters in Eugendorf. Today, I'm pleased to say that almost all of our Austrian locations now generate PV electricity", says Managing Director Stefan Kuhn, explaining his company's strategy.

In 2022, Salzburg AG also equipped the German sites in Hohenlinden near Munich and Wisent near Regensburg with PV modules.

Kuhn is convinced by solar power

The climate-conscious and sustainable Kuhn Group also counts on green energy from solar power beyond the borders of Salzburg. Emco Hallein (a subsidiary of Kuhn Holding) also already produces 400 kWp on its own roof. At the Himberg site in Lower Austria, Kuhn installed a 119 kWp PV system in cooperation with Salzburg AG. Salzburg AG also fitted systems with a total output of around 420 kWp for the company at sites in Germany, Upper Austria, Styria and Tyrol.

"Sustainability is very important to us as a family business with a long-term outlook. Photovoltaics is an important building block that not only saves CO2, but also makes economic sense for us", says Stefan Kuhn contently.



Foreword

Dear business partners,

This year's trade fair once again broke all previous records, generating real enthusiasm with its dynamism, size and innovative power.

KOMATSU focused on the following topics:

Innovation:

13 brand new models were exhibited

Sustainability:

Reduction of diesel consumption and presentation of electric excavators

Digitisation:

The **digital connection of machines, processes and even cross-manufacturer systems** provided a spectacular demonstration of what the construction site of tomorrow will look like.

With **Smart Construction**, KOMATSU has created a pioneering platform that is revolutionising the entire construction process.

KUHN in the thick of it all – with passion and foresight

Our teams are working tirelessly to turn these technologies into tangible benefits for our customers. For our goal is clear: **We want to be your strong, reliable and innovative partner in the field of smart construction.**

Thank you very much for your visit to Bauma, your inspiring discussions and the trust you have placed in us!

We wish you continued **success, great projects and the best of health!**

Your Kuhn family

Stefan Kuhn *Andreas Kuhn* *Günther Kuhn*

Eugendorf, June 2025

Handover: First Komatsu WA485-11 in Austria

Strobl Schotter- und Betonwerk in Weiz is the first company in Austria to use the brand new Komatsu WA485-11, equipped with a Hardox 500 TUF loading shovel from Winkelbauer.

The decision in favour of the first Komatsu WA485-11 in Austria was made following intensive discussions at the MAWEV Show 2024 and an on-site test phase. It is therefore not only the first wheel loader of this type used in Austria, but also the first Komatsu machine at Strobl.

Peter Eibisberger, Managing Director of Strobl, is pleased with the collaboration with Kuhn. "The fact that we could test the machine on site was very important. This meant we could adapt the loader perfectly to the requirements in the quarry. The company colour – our distinctive Strobl red – is of course also a real highlight for us". The wheel loader was fitted with a Winkelbauer

loading shovel.

The Komatsu WA485-11 and the WI loading

shovel will now be used for loading lorries and for feeding the asphalt mixing plant.



Official handover of the new Komatsu WA485-11 at Strobl Schotter- & Betonwerk; from left to right: Christian Moser (Kuhn Sales Manager), Florian Handl (Kuhn Field Service), Daniel Schuh (Strobl Operations Manager), Peter Eibisberger (Strobl Management), Georg Fetz (Winkelbauer Sales Manager)

One platform; endless possibilities: MC-X

Seamless control for your entire fleet.

Unleash the full potential of your mixed machine fleet – with the MC-X platform. One centralised solution for all earthmoving and road construction machines – with consistently high performance that will inspire your operators.

- Standardise work flows
- Simplify training
- Increase productivity

MC-X delivers responsive control that feels intuitive to operators. Less rework, more precision – simple. Scalable. Upgradeable. Machine-independent. MC-X – a platform that connects everything.



Find out more at:
topconpositioning.com

TOPCON
Authorized Dealer

KUHN -Baumaschinen

Habau receives 39 Komatsu machines



The last machines of the large order for 39 Komatsu machines were delivered from Kuhn Baumaschinen's headquarters in Eugendorf to construction sites in Austria and Germany at the beginning of April.

At the beginning of April, the last Komatsu machines of an extensive machine order were delivered from the headquarters of Kuhn Baumaschinen in Eugendorf to various Habau Hoch- und Tiefbaugesellschaft m.b.H. construction sites in Austria and Germany. All chain and mobile excavators are equipped with quick-change systems and attachments delivered by the Baumaschinentechnik company.

The machine order includes **25 chain excavators** from 20 to 36 tonnes, **12 mobile excavators** from 16 to 20 tonnes, a bulldozer, a wheel loader and seven grippers. More specifically, the following types were included: **2 x PC210LC-11**, **5 x PC240NLC-11**, **4 x PC240LC-11**, **10 x PC290NLC-11**, **4 x PC360NLC-11**, **2 x PW160-11**, **9 x PW180-11**, **1 x PW198-11**, **1 D61PX-24 bulldozer** and **1 WA380-8 wheel loader**. Delivery of the Komatsu equipment to the individual construction sites began in March 2025, and the last machines were handed over at the beginning of April.

Stefan Kuhn, Managing Director of Kuhn Baumaschinen, comments: "The basis for the extremely long partnership that connects us with Habau lies in the quality of the Komatsu equipment, but also in the professional service support that we



from right: Dipl.-Wirt.-Ing. (FH) Gerhard Wohlmuth, authorised signatory (Head of Mechanical Engineering, Habau and Held & Francke), Mag. Stefan Kuhn (Managing Director of Kuhn Baumaschinen), Michael Perwein (Managing Director of Baumaschinentechnik) and Ing. Christian Moser (Sales Manager at Kuhn Baumaschinen).

*provide not only in Austria, but also in Germany with Kuhn Deutschland and our dealer partners. The approximately **250 Komatsu machines** that we have supplied to Habau over the years highlight the high quality of this partnership".*

"The Komatsu machines and the products from Baumaschinentechnik (SW + excavator buckets) meet our requirements in every respect. I can only emphasise that we

are very well prepared thanks to our professional partners – Kuhn Baumaschinen and Baumaschinentechnik. In this regard, I would also like to thank everyone at the manufacturing plants and workshops who made it possible to deliver this extensive machine order on time!", emphasises authorised signatory Gerhard Wohlmuth from HABAU.

Handover in Slovenia to long-standing customers

The **D51PX-24** from Komatsu is a powerful bulldozer used by GMTT Leščanec d.o.o. It has a new engine, an optimised hydraulic system, and an improved pump control system.



Handover of the D51PX-24 bulldozer to GMTT Leščanec d.o.o.;
from left to right: Jure Biškup (Kuhn d.o.o.), Marijan Leščanec jun., Marijan Leščanec sen.

The Komatsu **PC16R-3** compact mini-excavator combines state-of-the-art technology with Komatsu's decades of experience. It is perfectly suited for transport on a car trailer. Župa d.o.o. has decided to purchase this compact mini-excavator.



PC16R-3 HS received by Župa d.o.o. – in the photo: Jaser Dalipovski



Perfectly suited for transport on a car trailer

The Komatsu **PC138US-11** excavator is fast and precise. With its powerful Komatsu engine, Komatsu CLSS hydraulic system, and first-class operator comfort, this excavator achieves the highest productivity in its class. VBT d.o.o. is also convinced of the effectiveness of the **PC138US-11**.



PC138US-11 handover to VBT d.o.o.;
from left to right: Andrej Zorman (Spare Parts), Jure Biškup (Kuhn d.o.o.), Gašper Majdič (Managing Director of VBT d.o.o.)



The right tool for every job

INNOVATIVE
in product design

High performance with low weight

Extremely few moving parts

Adjustable control valves

Minimal maintenance requirements

Ultra-low operating costs

FRD hydraulic breakers



BECAUSE EXPERIENCE COUNTS

Largest cement manufacturer in Croatia opts for Komatsu wheel loader

Cemex Croatia is the largest manufacturer of high-quality cement in Croatia and plays a significant role in the construction market. The company has a positive impact on the local economy and is strongly committed to sustainable development.

Founded in Mexico in 1906, Cemex has grown through numerous acquisitions from a local supplier to a successful global Group that manufactures high-quality construction products and provides reliable services to customers and municipalities in over 50 countries.

Cemex has been active on the Croatian market for 20 years and currently employs more than 550 people. The company operates 2 cement factories, 7 concrete

plants, 10 distribution centres on the coast and 2 sea terminals.

Every year, Cemex produces around 2.6 million tonnes of cement and 300,000 m³ of concrete.

To increase efficiency, Cemex continuously invests in personnel and equipment.

In the last 3 years, **3 Komatsu wheel loaders** have been purchased:

1 x **WA380-8E0** for concrete production in Zagreb and 2 wheel loaders (**WA380-8E0 and WA480-E0**) for the concrete plants in Dalmatia and the central warehouse in Kaštel Sućurac.

The pictures show moments from the delivery of the last two units WA380-8E0 and WA480-8E0 in Kaštel Sućurac in Dalmatia (Croatia).



WA380-8E0 was handed over by Ante Jerčić, Sales Manager of Kuhn Hrvatska d.o.o., and Monika Požega, Plant Manager for Ready Mixes of Cemex Hrvatska d.d.



WA480-E0 was handed over by Ante Jerčić, Sales Manager of Kuhn Croatia d.o.o. and Dražen Mihanović, Production Manager of Cemex Croatia d.d.

XCENTRIC RIPPER

The revolution in mining and rock mining

- Up to 5 times higher production compared to a hydraulic hammer
- Inexpensive alternative to drilling and blasting
- Suitable for all standard excavators

Below the main image, a row of smaller images shows the ripper attachment being used on various types of rock and concrete.

V-Híd Kft. received 12 new machines from Kuhn Földmunkagép Kft.

We are proud to announce that **V-Híd Kft. received a total of 12 premium class machines** from Kuhn Földmunkagép Kft. as part of its latest investment.

The transferred fleet consists of the following vehicles:

- 2 x Komatsu D61EX-24 bulldozers
- 2 x Komatsu D71EX-24 bulldozers
- 3 x HBM Nobas BG 180 graders
- 5 x Komatsu PW160-11 mobile excavators

The machines were selected following a thorough evaluation process that took professional aspects into account. On behalf of V-Híd Kft., the customer **carefully examined the alternatives available on the market** and looked for machines that would function reliably in the long term.

In the end, the decision to choose **the Komatsu and HBM Nobas brands** was no coincidence. The main criteria for the selection were:

- **Outstanding quality and technological reliability**
- **Low operating and maintenance costs**
- **Fast, professional service from Kuhn Földmunkagép Kft.**



This collaboration is further proof that **Kuhn Földmunkagép Kft. offers** its partners not only machines, but **also value, operational reliability, and support.**

We would like to thank V-Híd Kft. for

their trust and congratulate them on their investment — we are confident that the new machines will support their construction projects effectively in the long term!

E-Parts Store

Kuhn.Portal



If you want to save time and money, then the **E-Parts Store** is the right solution for you.

Here are just a few of the benefits you can expect:

- **Access to orders 24 hours a day, 365 days a year**
- **Procure original Komatsu spare parts quickly and inexpensively**
- **Instant information on price and delivery status**
- **Overview of your orders**

Simply register using the form on our homepage and we'll contact you immediately to activate your access.



Tehnostrade s.r.l. deploys 30 HM300 dump trucks on the final section of the Romanian A1 motorway



The delivery: 10 Komatsu HM300 dump trucks, lined up and ready for work. And as always, our KUHN service team is on hand to ensure that everything runs smoothly — from the first startup to full operation.

In early 2025, KUHN Romania delivered 15 new Komatsu HM300 articulated dump trucks to **Tehnostrade** to support the construction of the final section of the A1 motorway between the counties of Hunedoara and Timis.

The dump trucks were put into operation between January and March and are now being used in one of the most complex areas of the project — tunnel construction.

Years of trust, kilometres of progress

KUHN Romania and Tehnostrade have a long-standing partnership based on mutual trust, consistent results, and reliable technical support. This latest delivery follows an earlier purchase of 15 HM300s for the A7 motorway project in Moldova, which took place in early 2023. The excellent performance and durability of these machines prompted Tehnostrade to invest in 15 more units.

For the first time, all **30 Komatsu HM300s** are being used together on a construction site, helping to complete one of Romania's most important infrastructure projects.

With a fleet of **170 Komatsu machines**, Tehnostrade is one of the largest Komatsu users in the country, demonstrating its confidence in the brand and the ongoing support provided by KUHN Romania.

Robust machines for big missions

The Komatsu HM300 is designed for high productivity in harsh working conditions. With an engine power of 248 kW (332 hp), a load capacity of 17.1 m³, and a maximum payload of 28 tonnes, this dump truck is a proven solution for demanding construction environments.

Support that keeps projects running

Each machine was delivered with comprehensive operator training and onsite commissioning by KUHN service experts. Our team continues to provide preventive maintenance, fast technical support, and easy access to spare parts for maximum uptime.



One of our service technicians captures a moment during the commissioning of the Komatsu HM300 on site. Behind every successful delivery is a qualified and dedicated team that ensures that each machine is configured, tested, and ready to work in real construction site conditions.

bauma 2025 in Munich —

The most significant trade fair the challenges of today and



Komatsu exhibited 13 new machines at
bauma 2025



PC220LCi-12



WA475-11



One of the most photographed exhibits at
bauma was the PC7000-11E.

From April 7 to 13 2025,
Komatsu showcased its
products with 34 machines
on display across more than
7,500 square meters of
exhibition space.

Komatsu exhibited 13 new machines at bauma

Among the 13 new products on display was
the **brand-new PC220LCi-12**. Customers
are now benefiting from the unique features
of the iMC 3.0. The machine not only
sets new standards in terms of product-
ivity and efficiency, but also offers a
new cab with maximum operator comfort
and seamless connectivity solutions that
simplify the digitalisation of the construction
site.

Another highlight was the new 11 series
wheel loaders, **WA475-11** and **WA485-11**.
The two new models are characterised
by unmatched performance and fuel
efficiency, made possible by a **powerful
and high-torque engine** and a **power-split
transmission**.

Electric excavator

The new **HD605-10** rigid frame dump truck,
which is available from now, was also on
display in the demo area. When developing
the HD605-10, Komatsu increased
performance, reduced operating weight,
increased payload to **64 tons with a 43
m³ bucket**, optimised durability, adapted
systems for all-round visibility, and reduced
fuel consumption.

Several electric excavators were displayed
in Hall C6, including the now proven
PC33E-6 and the **PC20E** and **PC26E**
prototypes. The **PC138E-11** and **PC210LCE-11**
prototypes were also in the spotlight,
along with several pioneering concept
machines.

With the **PW168-11** and **PW198-11** mobile
excavators, Komatsu is also expanding
its short-tail excavator product range to
include machines in the 16-20 tonne weight
class. The cab of Komatsu's hydraulic
excavators has also undergone a thorough
redesign.

Visitors were also drawn to the electrically



Our dedicated KUHN team behind the Form

powered **PC7000-11E** mining excavator,
which was demonstrated in operation with a
backhoe bucket. The PC7000-11E is equipped
for the toughest operating conditions and
stands for outstanding durability, reliability,
and performance.

Komatsu also unveiled a **7.5-tonne compact
short-tail mobile excavator**, the **PW75**,
at bauma, which fills the gap among the
medium-sized excavators. This machine
allows any attachments to be used easily
and precisely.

highlights from Komatsu

air for machines, solutions and services for tomorrow



Formula 1 Williams

Kuhn employees at bauma 2025 – We were right in the middle of it!

At bauma, Kuhn employees presented the latest machines to show customers the most innovative solutions.

Visitors were impressed by the advanced technologies and the quality of the equipment. Kuhn counts on state-of-the-art equipment to provide construction companies with efficient and reliable machines.

This presentation strengthens the partnership with customers and demonstrates the company's forward-looking approach.

Komatsu Williams Racing

The exhibition of the Formula 1 car at the Komatsu stand at bauma highlighted the partnership with Williams Racing. This symbolises the combination of technology and performance — values that Komatsu integrates into its machines. The impressive Williams FW46 was a popular photo subject.



Every day, the Kuhn family welcomed up to 150 invited business friends to the Bavarian Evening at Augustiner Bräu



large crowds of visitors

Video – Thank you!
Komatsu at bauma 2025



Smart Construction Remote becomes standard equipment for all machines with Komatsu control systems

Komatsu announces that Smart Construction Remote will become standard equipment for machines with Komatsu control systems in the future. This includes Intelligent Machine Control (iMC) and the Smart Construction 3D display system.

Smart Construction Remote is a cloud-based solution that allows users to remotely access both Komatsu machines and machines from other manufacturers. This enables problems to be solved more quickly and efficiently, reducing downtime and increasing performance. Furthermore, construction files can be sent to the machines even when they are switched off. This ensures seamless collaboration between the office and the job site.

Remote access to the machines means fewer trips to the construction site, reducing fuel consumption and CO2 emissions.

Another milestone concerns the Smart Construction 3D display system, which can now also be used with tiltrotators from leading manufacturers such as Engcon, Steelwrist, Rototilt, and OilQuick. This milestone ensures that construction companies and their operators achieve even greater efficiency, precision, and versatility, regardless of the tiltrotator used.



Handover of 21 Komatsu construction machines to DEK Prague

DEK is a group of companies that supplies materials and services to the construction industry.

Through strategic investments and continuous development, the company has become the largest supplier in the Czech Republic. This is confirmed by annually increasing sales and satisfied customers.

Kuhn Bohemia has sold an impressive **21 Komatsu** machines to DEK Praha – 10x PC138UCL-11, 5 x PW148-11; 4 x WA70M-8 and 2 x WA100M-8. This confirms Komatsu's strong market position and strengthens the partnership between Kuhn Bohemia and DEK.



emco

THE IDEAL LATHE FOR EVERY WORKSHOP



scan me



www.emco-world.com

5 new Komatsu construction machines for the KÁMEN Zbraslav fleet

KÁMEN Zbraslav successfully cooperates with large companies in the construction industry. As one of the leading manufacturers of building materials, the company plays an important role in the completion of numerous construction projects. Last year, KÁMEN Zbraslav purchased **5 Komatsu machines (3 PC490LC-11 and 2 HD605-8)**, which highlights the close cooperation between our companies.

KÁMEN Zbraslav owns a total of 16 operations – 10 quarries, 2 sand pits, and 4 concrete plants – and around 50 construction machines, with Komatsu machines holding a 30% market share. The investment in Komatsu machines demonstrates the company's confidence in the quality and reliability of this equipment.

Cooperation with major manufacturers and the use of innovative machines help to strengthen KÁMEN Zbraslav's competitiveness.



from right: Zdenek Voves, Antonin Kubice, Jan Král, Karel Pova, Petr Behunek (employees of Kámen Zbraslav), and Jaromír Kurka (Sales Representative of Kuhn Bohemia a.s.)

2 new Komatsu machines at the Kladno tip at Destro

At the beginning of April, KUHN-Bohemia a.s. delivered 2 new Komatsu machines to DESTRO s.r.o. in Kladno.

These are a **PC490/LC-11** hydraulic track excavator and a **WA475-10** wheel loader. The machines are designed for the extraction of steel slag from the tip.

PC490/LC-11 hydraulic excavator

This excavator is characterised by its exceptional performance and environmental friendliness. It is equipped with a powerful Komatsu engine with an output of 270 kW. Its operating weight is 47,370 kg.

Performance and advantages

The main advantages of this excavator are its low operating costs and high performance. Both machines are very powerful and economical and are equipped with new technologies that improve both work performance and operator safety and comfort. Thanks to more accessible locations and protective covers, the machines allow for quick and safe maintenance – something which is appreciated by Destro. Reliable and high-quality service is guaranteed by KUHN – Bohemia a.s. throughout the entire service life of the machines.



PC490/LC-11 track excavator and WA475-10 wheel loader

MBM-GROUP (1 x PC490LC-11Eo, 2 x HM300-5Eo and 1 x GD675-7Eo)



The origins of the MBM-GROUP date back to 1997.

With the gradual expansion of its activities and market development, the MBM-GROUP has developed into a modern construction company with a focus on building construction and civil engineering.

For the highly demanding construction site of the 12-km-long Šala bypass, MBM GROUP a.s. decided to expand its fleet with a **KOMATSU PC490LC-11Eo** track excavator and 2 **KOMATSU HM300-5Eo** articulated dump trucks.

Since the MBM GROUP a.s. needed a large amount of aggregate for the construction of the bypass, it also purchased a powerful McCloskey C2CR cone crusher with a 2-screen primary crusher and a crushing capacity of up to 300 tonnes per hour.

As the construction of the 12-kilometre road section requires high precision in the substrate, the MBM Group has expanded its fleet with a powerful grader.

KOMATSU GD675-7Eo with automatic 3D levelling.



New excavator series sets new standards

Komatsu Europe presents the brand-new PC220LC-12 and PC220LCi-12 excavator models. The machine is now setting new standards for the entire construction industry in terms of performance, efficiency, operator comfort, and digitalisation, offering unparalleled customer benefits.

Measurable productivity gains with a direct impact on the company's economic results

The PC220LC-12 and PC220LCi-12 are equipped with a new powerful 129 kW next-generation Komatsu engine and the new electronically controlled hydrostatic drive. **18% lower fuel consumption, or 2.1 litres less fuel per hour** compared to the previous model **7% increase in tear and breakaway forces**.

Operating the machine is intuitive and so relaxing to work with.

Unique level of comfort and outstanding performance

The new cab not only allows for intuitive operation of the machine, but also raises operator comfort to a previously unattained level.

The cab is significantly larger and offers 30% more legroom and an optional premium driver's seat for limitless comfort. The field of vision to the lower right has also been increased by 50%.

The monitor system with a high-resolution 8-inch touchscreen enables intuitive operation and easy access to information. The machine is also equipped with extremely versatile, ergonomic, and programmable control levers. The hydraulic settings can also be fully customised by operators to suit their needs.

Furthermore, the machine is equipped with a driver identification system that can store up to 50 driver profiles.

The **PC220LC-12** also comes standard with an integrated payload scale and 2D machine control.

New smart machine controller 3.0 with unique functions

Komatsu has been offering intelligent machine control from the plant for over 10 years, and the new PC220LCi-12 is equipped with the latest generation, iMC 3.0, which has several features that are unique in the industry.

The iMC 3.0 can also be used with tiltrotators and offers features such as 3D workspace limitation and an automatic line driving



Comparison of new series with previous model

| | PC220LC-12 (new) | PC210LC-11 |
|---------------------------------------|------------------|------------|
| Operating mode | P+ | P |
| Productivity (t/h) | 118 | 100 |
| Fuel consumption (l/h) | 98 | 100 |
| CO2 emissions/tonne of material moved | 83 | 100 |

function. Another step towards autonomous operation is the automatic swing control for semi-automatic truck loading.

With the standard integrated **Smart Construction Remote**, customers can remotely transfer construction files to the machine and solve problems via remote control of the screen without having to drive to the construction site.

The PC220LCi-12's advanced payload scale simplifies loading and prevents overloading. In conjunction with the optional Smart Construction Fleet solution, payload data is automatically exchanged between the excavator and dump truck, removing the need for drivers to enter data.

The new 12 Series machines are even more robust

and offer maximum reliability in every application.



6 x demolition excavators (PC490HRD-11 + PC390HRD-11) delivered to long-standing customers

Demolition excavators number five and six were delivered in the current fiscal year.

The machines were handed over to Aregger AG (PC490HRD-11) and H.U. Schweizer GmbH (PC390HRD-11).

The PC490HRD expands the customer's existing fleet and is already the second machine of this type.

The PC390HRD replaces the long-serving PC350HRD-8, while the remaining machines were delivered to long-standing customers such as KIBAG and Isenschmid AG.

Machine number seven, another PC390HRD-11, arrived the following Monday. It would have been nice to have photographed all three machines at the same time.

Nevertheless, the customer, Gebr. Stöckling & Co. AG, was delighted with their modern

machine in April.

The demolition excavators stand out with their high performance, reliability, and the innovative "K100" changing system, which is unique on the market. The positive sales development is primarily due to legal developments in the area of high-density construction. In urban areas and conurbations in particular, old buildings need to be replaced to make room for new construction projects.

H.U. Schweizer GmbH (left: PC390HRD-11) and Aregger AG (right: PC490HRD-11)



Efficiency leap in limestone mining – Komatsu HD405-8 in action

Eduard Merkle GmbH & Co. KG increases productivity and reduces emissions with dump trucks from Kuhn Baumaschinen Deutschland

BLAUBEUREN/ALTENTAL (MA). An impressive resume: Significant improvements in productivity and energy efficiency – this is what Eduard Merkle GmbH & Co. KG has seen since the company started using the Komatsu HD405-8 dump truck in their limestone quarry.

Eduard Merkle GmbH & Co. KG is a leading producer of powdered limestone and granules in Baden-Württemberg. The company has been operating the limestone quarry in Blaubeuren-Altental since 1924 and produces around 500,000 tonnes of limestone products annually. Since February 2023, the HD405-8 has been transporting the mined material to the primary crushing and screening plant – with impressive results.

The Komatsu HD405-8 scores with its fuel-efficient drive train, automatic idle shutdown, and high retarder performance. With an engine output of 386 kW (518 hp), it reaches a speed of up to 66 km/h and offers a bucket capacity of 24 m³ and a payload of 40 tonnes. Given that a large

part of production will come from deep excavation in the coming years, the bucket was equipped with a tailgate. In combination with the raised side walls, the payload was increased by around 20 per cent, significantly

reducing specific fuel consumption (litres per tonne). Thanks to these technical features, the machine contributes significantly to increasing efficiency in the limestone quarry of Eduard Merkle GmbH & Co. KG.



(From right) Managing Director Hartmut Koch-Czech, deputy Quarry Manager Otto Baier, Quarry Manager Bernd Hilsenbeck (all three from Eduard Merkle GmbH & Co. KG), and Michael Specker, authorised signatory at Kuhn Baumaschinen Deutschland. Since February 2023, Merkle has been working with the Komatsu HD405-8 dump truck in the limestone quarry in Blaubeuren-Altental — with impressive results.

Reliable performance for concrete construction

Gebr. Adler GmbH & Co. KG uses the Komatsu WA380-8 from Kuhn Baumaschinen Deutschland

EDLING (MA). Gebr. Adler GmbH & Co. KG, a family-run company founded in 1956 that specialises in concrete and gravel plants, is expanding its fleet of machinery with a Komatsu WA380-8.

The established company, which has made a name for itself with its motto: "We are there for our customers, from the sandbox to the large construction site", was looking for a powerful and economical solution for material handling some time ago.

The WA380-8, with an engine output of 143 kW (192 hp) and a bucket capacity of 3.2 to 6.5 m³, stood out with its optimal combination of performance, fuel efficiency, and operational ease. Thanks to the EPC (Electronic Pilot Control) control lever, the machine responds quickly and precisely to control commands, while the Komatsu SmartLoader Logic System ensures reduced fuel consumption.

After more than 4,000 operating hours, the wheel loader has proven to be extremely reliable and fully operational.

"The cooperation with Kuhn was professional and reliable, from consultation to delivery.

We have received a powerful machine that has already proven itself here", says Adler.



At Gebr. Adler GmbH & Co. KG., the WA380 is a powerful and economical solution for material handling.

POWERSCREEN

MARKET LEADING CRUSHING AND SCREENING TECHNOLOGY

Screening and crushing plants

POWERSCREEN®
A TEREX BRAND

Reliability meets innovation in the quarry

Bayer. Wald Granitwerke K. A. Thiele GmbH is using Komatsu WA475-10 FÜRSTENSTEIN / AUERBACH (MA). Bayer. Wald Granitwerke K. A. Thiele GmbH, based in Fürstenstein in Lower Bavaria, can look back on 100 years of experience. What began in 1925 as a natural stone business under Karl-August Thiele has grown over the decades into a modern, internationally active gravel plant with around 50 employees and two locations. Innovation and a down-to-earth attitude go hand in hand at Thiele — this is evident not only in products such as the specially developed Luxivit granite, but also in the choice of technology. The latest example of this is the addition of a Komatsu WA475-10 to the machine fleet, supplied by Kuhn Baumaschinen Deutschland. The new wheel loader is used at the Hötzelberg quarry near Auerbach, where tonnes of material are moved, loaded, and processed every day. “We use the machine for practically everything: from material extraction to transport and earthmoving. It has to be reliable, powerful, and comfortable — and that’s exactly what it is”, explains Roland Wulzinger, the main operator of the machine. “We feel well looked after. If there’s a prob-



At Thiele, the focus is not only on machine performance, but also on reliable partnerships.

(From left to right): Angel Bibov, Managing Director of Granitwerke Thiele, Thomas Lang, Area Sales Manager at Kuhn Baumaschinen, Markus Raab, Operations Manager at Thiele, Roland Wulzinger, Wheel Loader Operator at Thiele, Helmut Urmann, Sales Manager at Kuhn Baumaschinen, Bavaria.

lem, it’s dealt with immediately”, emphasizes the team.

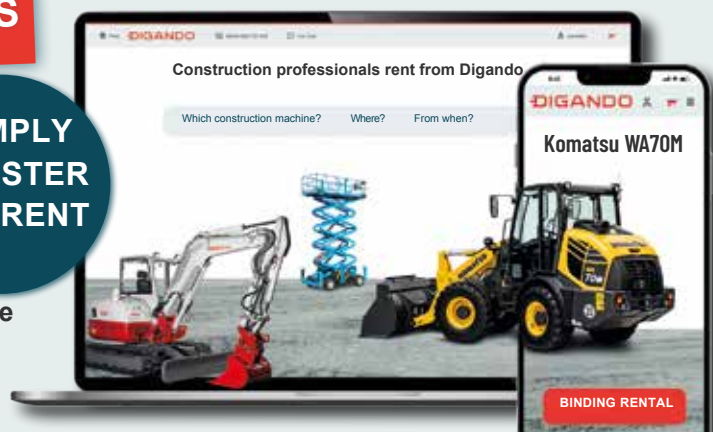
No wonder, then, that several Komatsu machines are already in use at Thiele.

B2B ONLINE MARKETPLACE FOR CONSTRUCTION MACHINES

- ✓ Binding online rental 24/7
- ✓ Availability in real time
- ✓ Construction machines & prices at a glance
- ✓ Rental agreement between leaser & lessee

**SIMPLY
REGISTER
AND RENT**

DIGANDO
READY TO RENT

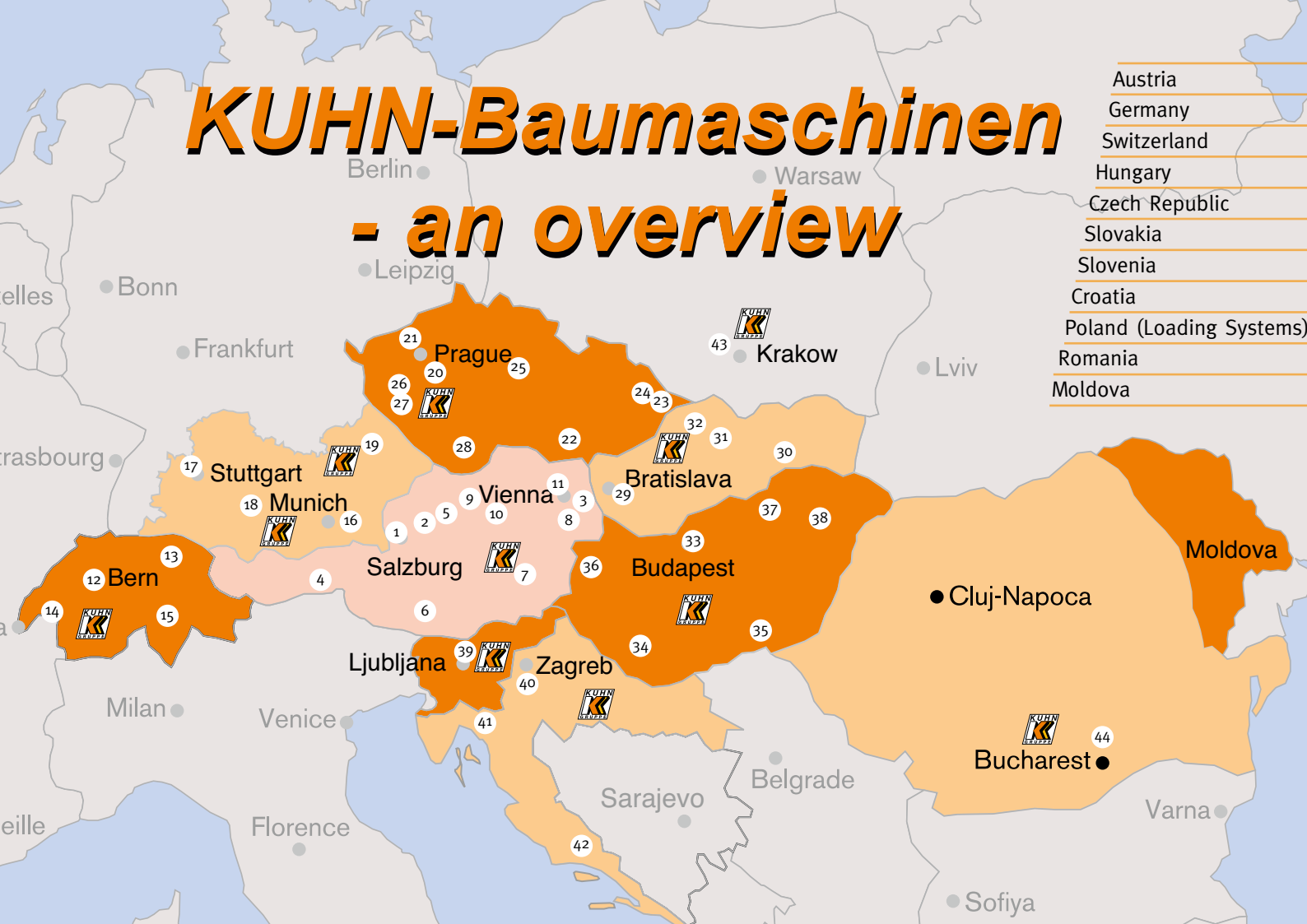


Over 18,000 construction machines in 160 rental stations

DIGANDO.COM

KUHN-Baumaschinen

- an overview



Kuhn branches near you

KUHN-Baumaschinen GmbH Austria

- 1 HQ Eugendorf near Salzburg
Tel. (+43) 6225-8206-0
- 2 Mondsee branch
Tel. (+43) 6232-6862
- 3 Himberg branch near Vienna
Tel. (+43) 2235-87580
- 4 Stans branch
Tel. (+43) 5242-64600-620
- 5 Vöcklabruck branch
Tel. (+43) 7672-725320
- 6 Villach branch
Tel. (+43) 4252-2848
- 7 Pernegg branch
Tel. (+43) 3867-8881
- 8 Achau branch
Tel. (+43) 2236-714880
- 9 Traun branch
Tel. (+43) 7229-20604
- 10 St. Georgen
am Ybbsfelde branch
Tel. (+43) 7472 61263-0
- 11 Bisamberg branch
Tel. (+43) 2262 714 00

KUHN-Schweiz AG

- 12 HQ Heimberg near Bern
Tel. (+41)334398822

- 13 Lommis branch
Tel. (+41)523696030
- 14 Granges branch
Tel. (+41)219462846
- 15 Tessin branch
Tel. (+41)791371823

KUHN-Baumaschinen Deutschland GmbH

- 16 HQ Hohenlinden
near Munich
Tel. (+49) 8124 4463-0
- 17 Stuttgart branch
Tel. (+49) 7150-2097-0
- 18 Elchingen branch
near Ulm
Tel. (+49) 7308-9 23 23 03
- 19 Würth a.d. Donau
branch
Tel. (+49) 94 82 - 80 21 81

KUHN-Bohemia a.s.

- 20 HQ Prague/Čestlice
Tel. (+420) 212200200
- 21 Most branch
Tel. (+420) 417638701
- 22 Brno branch
Tel. (+420) 547210141
- 23 Ostrava branch
Tel. (+420) 596238012

- 24 Opava branch
Tel. (+420) 601368588
- 25 Pardubice branch
Tel. (+420) 466971531
- 26 Plzeň Hrbítovní branch
Tel. (+420) 377462045
- 27 Plzeň Borská branch
Tel. (+420) 724723051
- 28 České Budejovice branch
Tel. (+420) 380900491

KUHN-Slovakia s.r.o.

- 29 HQ Senec/Bratislava
Tel. (+421) 263 83 85 09
- 30 Prešov/Haniska branch
Tel. (+421) 513 240035
- 31 Banská Bystrica branch
Tel. (+421) 484147012
- 32 Žilina branch
Tel. (+421) 417003766

KUHN-Kft.

- 33 HQ Budapest
Tel. (+36) 12898080
- 34 Kaposvár branch near Pecs
Tel. (+36) 309415710
- 35 Szeged branch
Tel. (+36) 304456248
- 36 Szombathely branch
Tel. (+36) 304456246

- 37 Miskolc branch
Tel. (+36) 304456251
- 38 Nyiregyháza branch
Tel. (+36) 304456241

KUHN d.o.o.

- 39 Trzin near Ljubljana
Tel. (+386) 1-5622271

KUHN - Hrvatska

- 40 HQ Zagreb
Tel. (+38) 512407522
- 41 Rijeka branch
Tel. (+38) 512407522
- 42 Split branch
Tel. (+38) 512407522

KUHN - POLAND (LOADING SYSTEMS)

- 43 Kuhn Polska Sp. z o.o.
(Loading Systems)
HQ Sosnowiec
Tel. (+48) 322-586030

KUHN - ROMANIA/MOLDOVA

- 44 Marcom RMC' 94 SRL
Romania
HQ Bucharest
Tel. (+40) 2135-2 21 64

www.kuhn.at



KOMATSU